

### **"The Pioneer's House" - Northern House c.1780-1820**

The building contains an earlier core structure of 3-4 rooms, which dates to c.1780. The lower walls of the oldest part were built in hornfels stone for a height of 700mm, as a waterproofing technique.

Originally a dwelling, the building also served as stables in the late 19<sup>th</sup> century.

It was converted back to a house and 'Victorianised' around 1885, with period details such as a veranda on posts, corrugated iron roof, built-up eaves, large sash-windows and doors.

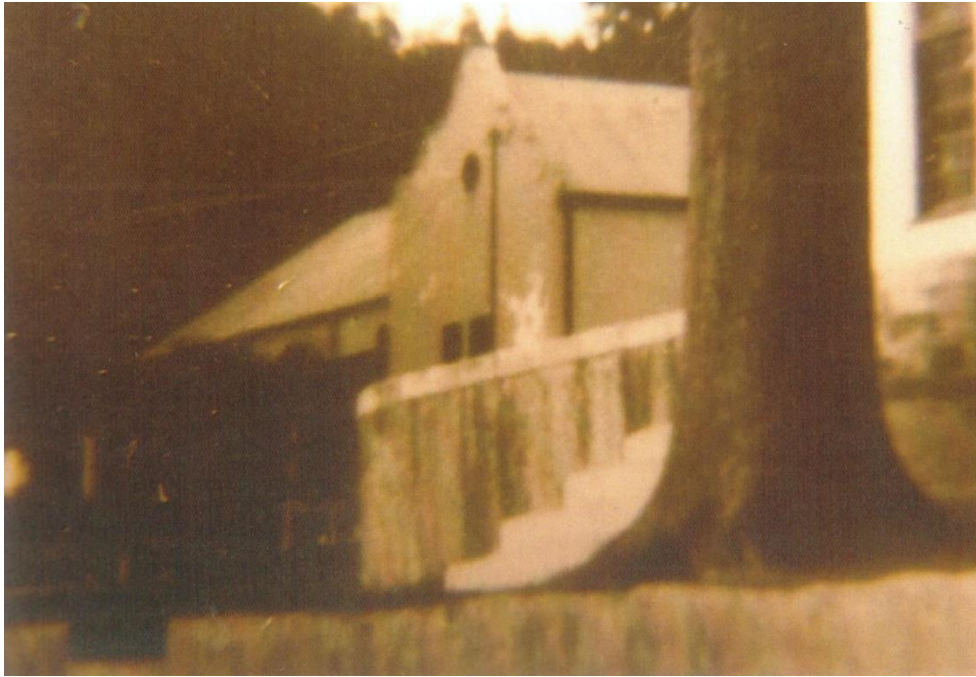
In the 1930s it was further altered, and much of the Victorian elements were lost. Pre-cast concrete columns were installed as well as a Cape Dutch Revival gable, which has since been clipped to the current fascia gable.

### **"Bywoners" cottage – Late 1700s**

The "Pioneer House" has an associated structure, the 'bywoners' cottage/ rental house, situated right up against it at its north end, which dates to the late 1700s. The brickwork indicates that parts of this building predate the house in front of it. (400mm wall thickness, brick size 224x12x8)

The steep incline of the embankment behind the house and cottage indicates decades of quarrying for clay, with which the structures on the farm were built. By the late 18<sup>th</sup>/ early 19<sup>th</sup> century this area was level and ideal for building. The earliest buildings may have been built here, and would have been replaced by more solid constructions once becoming dilapidated.





Enlargement of a small (6x8cm) photograph taken before 1965, of the Pioneer's House with its Cape Revival front gable. (Courtesy D. & J. Hugo, 2010)